



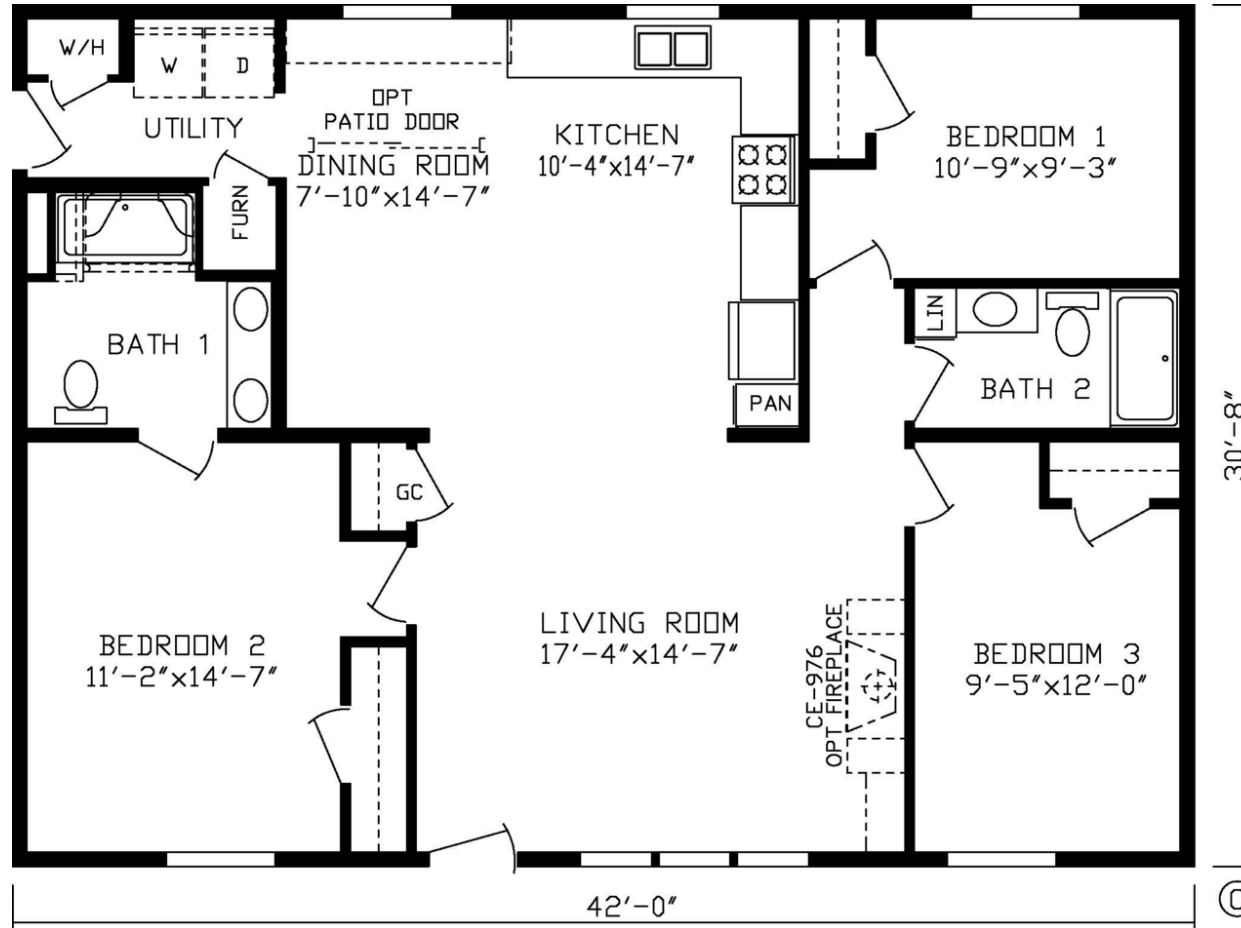
Oxford 92581K

3 Bedrooms, 2 Bathrooms, 1287 Square Feet

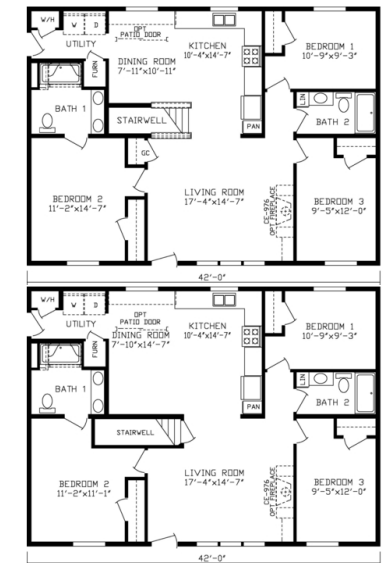
Series: Kingsley Modular

Home Type: Modular

Floor Plan



Additional Floor Plans



www.fairmonthomes.com

*IMPORTANT: Because we continuously update and modify Fairmont Homes products it is important for you to know that our brochures and literature are for illustrative purposes only. All information contained herein may vary from the actual home we build. Dimensions are nominal and length and width measurements are from exterior wall to exterior wall. The right is reserved to make changes at any time, without notice or obligation, in prices, colors, materials, specifications, features and models. Please check with your retailer for specific information about the home you select. (Add approximately four feet to determine transportable length.)

Kingsley Series Standards

Energy Saving Standard Features of the Kingsley Home

Energy Star **Kinro** Low E Thermopane Windows
Exterior Weather Wrap
OSB Exterior Sheathing Sidewalls & Endwalls
Foam Sealant Air Infiltration Barriers (All Windows & Doors)
Roof Insulation - Varies by State for Code Compliance
2x6 Sidewalls with R-19 Insulation
95% Plus High Efficiency **Trane** Gas Furnace
38"x 82" Vinyl Clad 6 Panel Front Door w/Storm
34"x 80" Vinyl clad 6 Panel Rear Door w/Storm
Positive Operating System



Exterior & construction

5/12 Roof Pitch (Ranch) - 12/12 Roof Pitch (Cape Cod)
8' Sidewall Height
Rafters 24" O.C.
Flat Ceilings Throughout
50# North Zone Construction Roof Load
Open Joist Floor System - 16" O.C.
2x10 Lam Beam Floor Construction at Marriage Line
3/4" Tongue & Groove OSB Floor Decking
Perimeter Heat
Interior Walls - 2x4 16" O.C.

Royal Double 4 Dutch Vinyl lap Siding

Owens Corning Architectural Shingles (Limited Lifetime)

Double Layer Tar/Paper at all Roof Vents & Edges
Double Layer of Shingles at Sidewall Edges
Residential Shutters on Door side
2 Roof Dormers Standard on Cape Cod



Floor coverings

Shaw Nylon Textured Carpet
5 Pound Rebond Carpet Pad
Beau Flor Roll Goods
Roll goods in Baths, Kitchen, Dining Room, Utility & Foyer
Tack Strip Carpet Installation in Living Room, Bedrooms, Halls



Electrical

2 - Exterior GFI Weather Resistant Receptacles
All Copper Wiring
GFI Bath & Kitchen Receptacles
Smoke Alarms
Wire and Vent for Dryer
Coach Lights @ All Exterior Doors
Glass Ceiling Light Fixtures in all Bedrooms

Décor

Smooth Finished 1/2" Drywall (Sidewalls)
Stippled Ceilings
3-1/2" Base Shoe Molding
Backsplash in Kitchen and Baths
3-1/2" Crown Molding above Kitchen Overhead Cabinets
2-1/4" Door and Window Casing
Mini Blinds Throughout

* Fairmont Homes prides itself in continuous improvement to ensure the highest quality. Products, standards and specifications are subject to change without notice

Plumbing

Moen Faucets
Plumb for Washer
40 Gallon Electric Water Heater 2/Double Element
Frost Free Faucet
Water Shut-Off Valves Throughout
Stainless Steel Kitchen Sink
Single Lever Kitchen Faucet
Main Water Shutoff in Water Heater Compartment



Baths

Fiberglass Tub in Master Bath
48" 2-Seat Shower Stall in some Master Baths
Elongated China Commodes
Pop-Up Drains on Bath Sinks w/Overflows
One Piece 60" Fiberglass Tub in Bath 2
Power Exhaust Fan w/Light - All Baths
Porcelain Lavs

Doors and Windows

Easy Clean Tilt-Out Sash, Single-Hung Windows
Kinro White Low-E Windows w/Grids
Dead Bolt Security Lock on Steel Doors
Floor Mounted Door Stops
Triple Hinged - Mortised Interior Doors
Pre-Hung Interior Doors
Brushed Nickel Interior Door Knobs
32" Passage Doors Where Available
Wood Interior Furnace Door



Cabinetry

30" Overhead Kitchen Cabinets
Cabinet Over Refrigerator
Custom Designed Kitchens
Oak Mortised & Tennon Shaker Cabinets Throughout
Hardwood Cabinet Doors
Hardwood Stiles with Hidden Hinges
Brushed Nickel Cabinet Hardware
Birch Lined Cabinets
Adjustable Center Shelf in Kitchen Overheads
Dove Tail Drawer Construction
Deluxe Roller & Drawer Guides
Drawer Over Door Construction
Brick mold Cabinet Cap

Appliances

18 CF Frost Free Refrigerator
Gas Range
Power Vent Range Hood



A Family of Housing Companies, Housing America's Families.
P.O. box 27, Nappanee, IN 46550
www.FairmontHomes.com

