



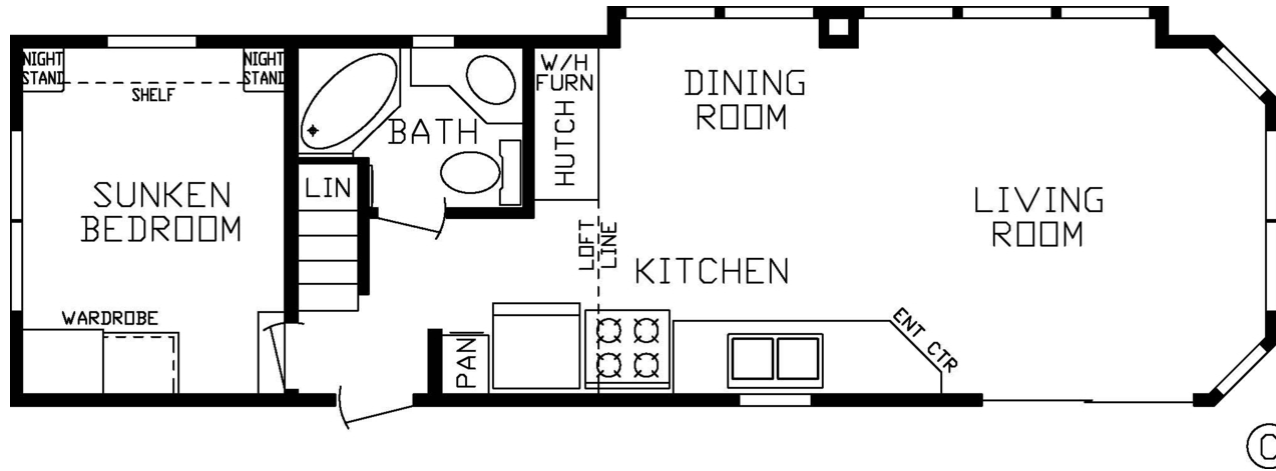
100169

1 Bedrooms, 1 Bathrooms, 399 Square Feet

Series: Country Manor US

Type: Park Model

Floor Plan



Fairmont Homes, LLC

www.fairmonthomes.com

*IMPORTANT: Because we continuously update and modify Fairmont Homes products it is important for you to know that our brochures and literature are for illustrative purposes only. All information contained herein may vary from the actual home we build. Dimensions are nominal and length and width measurements are from exterior wall to exterior wall. The right is reserved to make changes at any time, without notice or obligation, in prices, colors, materials, specifications, features and models. Please check with your retailer for specific information about the home you select. (Add approximately four feet to determine transportable length.)

COUNTRY MANOR

FAIRMONT
Park Model RVs

GENERAL

- 2" x 4" Sidewalls, 16" O.C.
- 2" x 6" Floor Joists, 16" O.C. Transverse
- 5/8" OSB Tongue & Groove/Glued & Screwed Floor Decking (4' x 8')
- 30 PSF Rafters, 16" O.C.
- 2/12 Roof Pitch — 6/12 Dormer Roof Pitch (Per Print)
- 7/16" OSB Plating Under Siding
- 1/2" Drywall Vinyl Covered Walls

FLOORING

- Shaw® Carpet in Sunken Bedroom, Loft & Stairway
- 5 lb. Rebound Pad
- Congoleum® Roll Goods Bath, Kitchen, Flat Floor Bedroom & Living Room

HEATING

- 40,000 BTU Gas Furnace
- 5" x 12" Residential Aluminum Heat Ducts
- 4" x 10" Floor Registers

ELECTRICAL

- Porch Light at Exterior Doors
- GFI Breakers Per Code
- 50 Amp Service w/25' Supply Cord
- Safe House Pkg. — Smoke Detector, LP Detector, Fire Extinguisher, & GFI Receptacles
- 1 Outside GFI Receptacle — Doorside Waterproof
- Recessed Overhead LED Lights
- 3 TV Jacks — Master BR, LR & Loft
- USB Port & Recept at Nightstands

DOORS

- Raised 6-Panel White Interior Passage Doors
- Vinyl Thermopane Patio Door per Plan
- Rear Entry Door w/Screen Where Applicable Per Plan

PLUMBING

- Double Bowl Stainless Steel Kitchen Sink
- High Arch Kitchen Faucet w/Pull Out
- 16 Gallon Gas/Electric/DSI Quick Recovery Water Heater
- Residential Ceramic Commode

BATH

- Exhaust Fan in Bath
- Porcelain Lav Bowl
- Lighted Medicine Cabinet
- 1 Piece Tub/Shower Per Plan
- Windows Most Plans

INSULATION

- R-19 Fiberglass Sprayed-In Insulation in Roof
- R-13 Fiberglass Kraft Backed Insulation in Sidewalls
- R-22 Fiberglass Insulation in Floor
- HomeGuard™ Exterior Weather House Wrap

CABINETRY

- 4 Cabinet Color Choices
- Hardwood Shaker Cabinets & Stiles — In Screwed
- European Style Hidden Cabinet Hinges
- Side Mounted Metal Drawer Guides w/Dovetail Wood Construction
- High Pressure Dual Laminated Countertops
- Tip Out Trays Under Sink

DÉCOR

- Wingate Wood Cornice Boards to Match Cabinets
- 2" Blinds, Selected Windows
- Vertical Blind for Patio Door
- 1/2" Residential Textured Drywall Cathedral Ceilings (Better Insulated & More Sound Proof)
- Bedspread, Pillows, & Shams — 3 Decor Color Tone Choices (Blue, Brown & Grey)

APPLIANCES

- Black Whirlpool® Appliances
- 2-Door Frost Free Refrigerator
- 30" Standard Gas Range
- Microwave Above Range

EXTERIOR

- Removable Hitch
- Royal Dutch Lap Vinyl Siding
- Owens Corning® Architectural Shingled Roof w/Lifetime Warranty
- Ice & Water-Weather Lock Under Shingles — Full Roof Coverage
- Ventilated Soffit
- Ridge Vent
- Residential Step Flashing at Dormer Transition
- Innovent® Vent Chutes in Roof
- Breathable Mesh Underbelly

WINDOWS

- Kinro® Egress Windows in All Bedrooms
- Kinro® Thermopane Vinyl Dual Glaze Low E Gridded Windows (White) Single Hung

FURNITURE

- Queen Slide-a-Bed Sleeper Sofa & Recliner
- Dinette Table w/4 Chairs or Bar Stools Per Plan
- Movable Island Per Plan
- Queen Bed w/Metal Bed Frame & Pillow Top Mattress

POPULAR OPTIONS

- Air Conditioning - 13.5K BTU
- Stainless Steel Appliances
- Wall Mount Loft Air Conditioner
- Fireplaces - with or without Stone
- 20 Gallon Electric Water Heater
- Lift Frame Bed w/Storage Box
- Glass Tub/Shower Door
- Shower IPO Tub/Shower
- Ceramic Backsplash - Kitchen & Bath
- Metal Roof
- Solid Surface Countertops
- Black Water Holding Tank w/Marine Toilet per Plan
- Gray Water Holding Tank per Plan
- Sectional Sleeper Sofa
- Non-Sunken Bedroom per Plan
- 15-Lite Door w/Dual Sidelites IPO Patio Door
- Loft Entertainment Center
- Metal Underbelly
- Stainless Steel Farmers Sink
- *available only on models 100164, 100165, 100166, 100168 & 100170
- Black Hardware



All descriptive representations are believed to be accurate at the time of publication. However, due to product improvement and changes in suppliers, design and production may vary. Note: Fairmont Homes reserves the right to make changes in price, colors, materials, components, and specifications and to discontinue models at any time without notice or obligation. Fairmont Homes assumes no responsibility for any error in type, print reproduction, specifications, or floor plans in this or any print material. ©12/2019 Fairmont Homes, LLC, ALL RIGHTS RESERVED

WHAT'S IN YOUR PARK MODEL?